

"NPED"

FEATURES

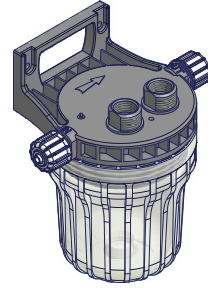
- Off-line probe holders (min flow 20l/h, max flow 80l/h)
- Simple installation
- Bracket for wall mounting
- All cups available transparent or black against sun light

SPECIFICATIONS

NPED1

Electrodes connection	Ø 12, with PG13,5 thread
Max operating pressure	5 bar
Max temperature	50°C
Fittings	6x8
Material	Hard PP
Transparent housing	SAN

NPED1
NPED2



NPED2

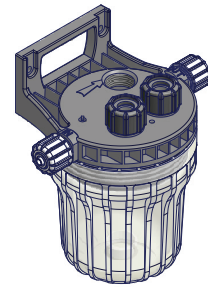
Electrodes Connection	2 epoxy Ø 12 electrodes
Other data as for NPED1.	

NPED2T: NPED2 with titan ground isolation

NPED3

Electrodes Connection	2 epoxy Ø12 electrodes and 3/4" threading
Other data as for NPED1.	

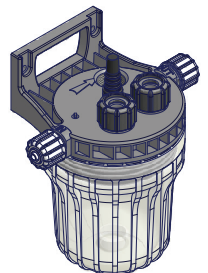
NPED3



NPED4 with flow sensor

Electrodes Connection	2 epoxy Ø12 electrodes
Other data as for NPED1.	

NPED4
NPED4/2F
NPED4-3/4



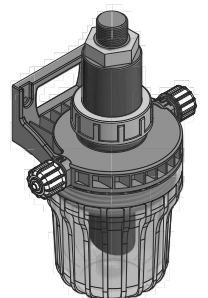
NPED4/2F 2 wires version for instruments with N.C. contact

Electrodes Connection	2 epoxy Ø12 electrodes
Other data as for NPED1.	

NPED4-3/4 3/4" threading for conductivity probe.

Electrodes Connection	2 epoxy Ø12 electrodes, 1 electrodes 3/4" threading
Other data as for NPED1.	

NPED-E



NPED-E2*

NPED-E for turbidity probe / NPED-E2* for ETORB2 probe

Electrodes Connection	ETORBH or EOLUM / ETORB2*
Material	Hard PP
Housing	10" SAN
Other data as for NPED1.	

"PEF"

FEATURES

- Off-line probe holder for amperometric cell
- Proximity switch mod. SEPR
- Flow level control
- Stabilizer from 0,4 to 3 bar
- PMMA body

SPECIFICATION

PEF1

Electrodes	2 electrodes Ø 12, Temperature, Amperometric cell (ECL1, 2, 3, 8, 9, 10, 11)
Max pressure	5 bar
Max temperature	50°C
Fittings	6x8 PVDF

PEF1/E

Electrodes	Temperature, Amperometric cell (ECL1, 2, 3, 8, 9, 10, 11)
Other data as for PEF1.	

PEF1/E/K

Electrodes	ECL17, ECL18
Max pressure	8 bar
Max temperature	75°C
Hose	PVDF
Other data as for PEF1.	

PEF5

Electrodes	2 electrodes Ø 12 (threading PG 13.5), Temperature, Amperometric cell (ECL1, 2, 3, 8, 9, 10, 11)
Other data as for PEF1.	

PEF2 (for external amperometric cell)

Electrodes	2 electrodes Ø 12 and Temperature
Other data as for PEF1.	

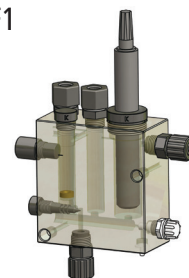
PEF3 (for external amperometric cell)

Electrodes	2 electrodes Ø 12 (threading PG 13.5) and Temperature
Other data as for PEF1.	

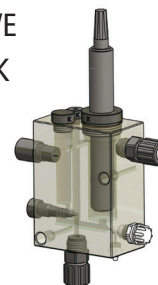
PEF17 (with proximity switch mod. SEPR1)

Electrodes	Amperometric cell (ECL1, 2, 3, 8, 9, 10, 11)
Max pressure	5 bar
Max temperature	50°C
Fittings	6x8

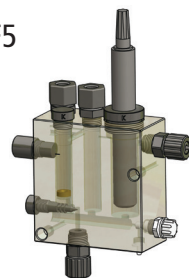
PEF1



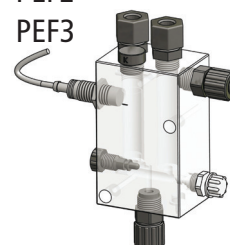
PEF1/E
PEF1/E/K



PEF5



PEF2
PEF3



PEF17

